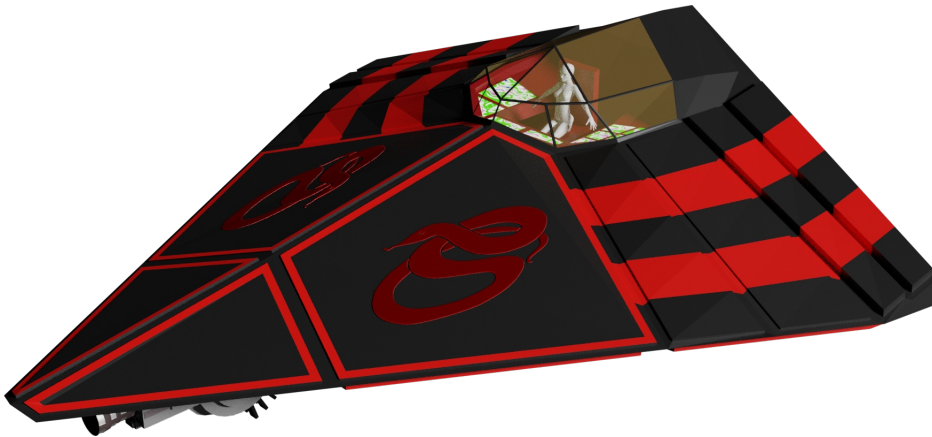


Krait Fighter 1

TECHNICAL BRIEFING



The 10t Krait is a small, heavily armoured short range fighter. With room for a single pilot, and carrying a forward facing pulse laser, it is designed for close fighter support and interception roles.

Overview

The Krait falls into the bracket of light fighter due to its size, though its heavy armour sometimes causes it to be classed as a heavy fighter.

There are two major variants, though both are based on the same standard hull. The Krait/A is the cheapest, coming in at under MCr10. It is limited in electronic capabilities, and has fewer export restrictions than the Krait/B.

The Krait/B comes fully equipped with a higher tech computer and electronics package, as well as having a stealth coating applied to the hull.

After market modifications can upgrade the computer systems further if so desired.

Crew

A Krait is designed to be flown by a single pilot, with life support lasting no more than 24 hours. There are no options for multiple pilots.

This limits the useful range of a Krait, and they normally need to be based from a star port, planetary base or

carrier. However, switching out fresh life support is a simple and quick process.

Planet base Kraits can simply leave the cockpit open whilst landed, and be

ready to go at a moment's notice. The week of fuel is enough to allow a Krait to be in a ready state in this way for up to a week, or two weeks if in dormant mode.

A dormant Krait requires 1D6 minutes (Engineer (Power), INT) to make it ready for launch.

Common Roles

Fighter

The Krait is designed as a simple fighter, designed for short range combat or patrol missions. Due to life support limitations, it needs to keep within range of a base of operations. This may be a starport or a carrier.

This often prevents the Krait from being used for escort duty, unless this is within the 100 diameter limit of a world.

Ground Support

Though streamlined, the Krait relies on its manoeuvre drive for handling within an atmosphere. It is more than capable of attacking ground targets within an atmosphere. It has landing gear suitable for planet side landing under standard gravity.

Source: Elite (1984)

Company: Faulcon de Lacy

Technology Level: 12

Total Tonnage: 10t

In Service Date: 1055

Cost: MCr19.4

2 Krait Fighter

TECHNICAL BRIEFING

TL 12	Krait/A	TONS	COST
Hull	10t standard hull, Armour (Crystaliron) 8	4	1.6
M-Drive	Thrust 6	0.6	1.2
Power Plant	Fusion Power Planet, 15	1	1
Fuel	1 week operation	0.25	-
Bridge	Cockpit	1.5	0.01
Computer	Computer/10 (TL9)	-	0.16
Sensors	Military Sensors	2	4.1
Weapons	Fixed mount pulse laser	-	1.0
Software	Manoeuvre, Intellect, Library	-	-
Cargo		0.65	-

TL 12	Krait/B	TONS	COST
Hull	10t standard hull, Enhanced Stealth Armour (Crystaliron) 8	4	6.6
M-Drive	Thrust 6	0.6	1.2
Power Plant	Fusion Power Planet, 15	1	1
Fuel	1 week operation	0.25	-
Bridge	Cockpit	1.5	0.01
Computer	Computer/20 (TL12)	-	0.16
Sensors	Military Sensors	2	4.1
Weapons	Fixed mount pulse laser High Yield, Intense Penetration	-	1.5
Software	Manoeuvre, Intellect, Library Evade/1 [10] Fire Control/2 [10]	- - -	- 1 4
Cargo		0.65	-

Crew

1 Pilot

Hull: 4 Armour: 8

Costs

Maintenance Cost

Cr 756 / month

Purchase Cost

MCr 9.07

Power 15

Basic Systems

2

Manoeuvre Drive

6

Weapons

3

Sensors

2

Crew

1 Pilot

Hull: 4 Armour: 8

Costs

Maintenance Cost

Cr 756 / month

Purchase Cost

MCr 19.57

Power 15

Basic Systems

2

Manoeuvre Drive

6

Weapons

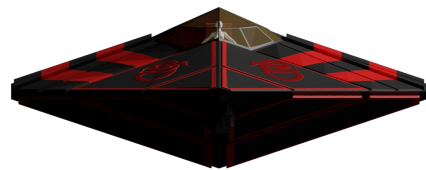
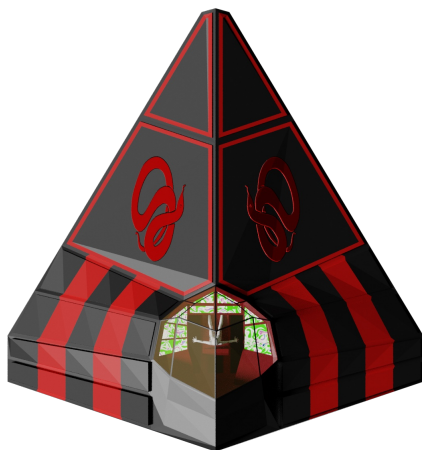
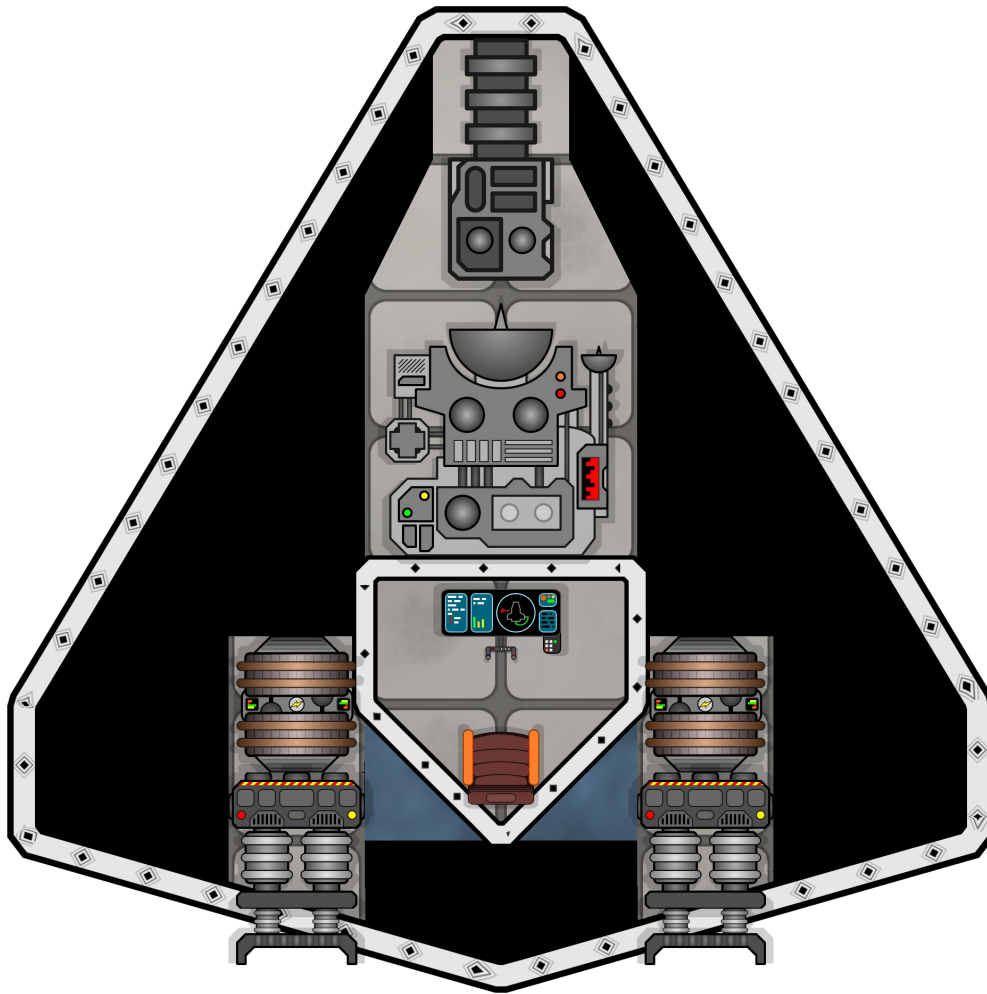
3

Sensors

2

Krait Fighter 3

TECHNICAL BRIEFING



4 Krait Fighter

TECHNICAL BRIEFING

Variants

Krait/A

The standard Krait/A lacks the advanced electronics, upgraded pulse laser and stealth features of the Krait/B, but is otherwise identical in all other ways.

It is a heavily armoured fighter that is excellent for close combat and short patrols. Like most fighters it is limited to a 24 hour life support duration, which restricts its range to pretty much the 100 diameter limit of a planet.

The model A is built for the cheaper end of the market, whilst still providing a solid fighter. The reduced electronics also makes it easier to export to organisations and polities which aren't licensed to receive high tech military hardware. It is still built on a TL12 chassis, but some features have been removed.

With the exception of the stealth hull, it is relatively easy to upgrade a Krait/A to Krait/B specifications.

Krait/B

The Krait/B is the advanced model of the Krait fighter. Equipped with Evade and Fire Control software for greater combat effectiveness, it also sports an upgraded pulse laser and stealth hull.

Though it is twice the price of the A model, the Krait/B is the preferred choice for most customers.

